

What is the maximum speed allowed for passenger cars on roads outside populated areas?

- 1.110 km/h.
- 2.100 km/h.
- 3.90 km/h.
- 4.80 km/h.
- 5.70 km/h.

Ans.'3

When transporting people in the equipped body of a truck, driving is permitted at a speed of no more than:

- 1.60 km/h.
- 2.70 km/h.
- 3.80 km/h.

Ans.'1

At what distance from the beginning of the hazardous area is this warning sign placed outside populated areas?



- 1.50 - 100 m.
- 2.150 - 300 m.
- 3.300 - 500 m.

Ans.'2

The movement of vehicles carrying organized groups of children is permitted at a speed of:

- 1.Not more than 60 km/h.
- 2.Not more than 70 km/h.
- 3.Not more than 80 km/h.

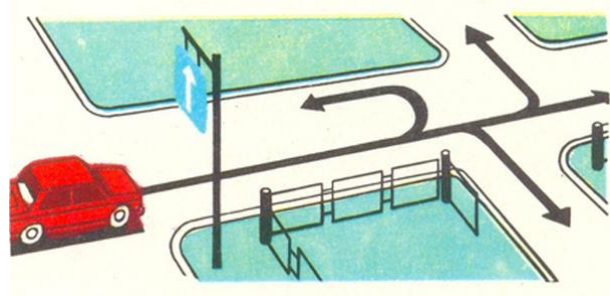
Ans.'1

Movement of vehicles in populated areas shall be allowed at a speed:

- 1.Not more than 60 km/h.
- 2.Not more than 80 km/h.
- 3.Not more than 90 km/h.

Ans.'1

In which direction is traffic allowed?



- 1.Straight ahead only.
- 2.Straight and right.
- 3.Straight, right, and left.
- 4.In all directions.

Ans.'3

<p>Intercity buses outside populated areas are allowed to move at a speed:</p> <ol style="list-style-type: none">1. Not more than 70 km/h.2. Not more than 90 km/h.3. Not more than 110 km/h. <p style="text-align: right;">Ans. 2</p>	<p>The movement of trucks with a permissible maximum weight not exceeding 3.5 tons outside populated areas is allowed at a speed:</p> <ol style="list-style-type: none">1. Not more than 90 km/h.2. Not more than 70 km/h.3. Not more than 80 km/h. <p style="text-align: right;">Ans. 1</p>
--	--

<p>Is it permitted to exceed the speed of 60 km/h in populated areas for drivers of intercity, interregional and suburban buses?</p> <ol style="list-style-type: none">1. Allowed only when driving on a road with two or more lanes for traffic in that direction.2. Allowed.3. Prohibited. <p style="text-align: right;">Ans. 3</p>	<p>Is the driver of an intercity bus allowed to exceed the speed of 70 km/h outside populated areas?</p> <ol style="list-style-type: none">1. Allowed only when driving on a road with two or more lanes for traffic in that direction.2. Allowed if the speed does not exceed 90 km / h.3. Prohibited. <p style="text-align: right;">Ans. 2</p>
---	--

<p>While towing, in the absence or malfunction of an emergency light signal, an "Emergency Stop" sign is installed:</p> <ol style="list-style-type: none">1. On the rear of the towed vehicle.2. At the front of the towing vehicle.3. At the driver's discretion, in a prominent position on one of the vehicles. <p style="text-align: right;">Ans. 1</p>	<p>When towing on a rigid coupling, the distance between the vehicles must not exceed:</p> <ol style="list-style-type: none">1. 1.2 m.2. 2.3 m.3. 3.4 m.4. 4.5 m.5. 5.6 m. <p style="text-align: right;">Ans. 3</p>
---	---

Is it permitted to transport people in the back of a truck when towing on a rigid or flexible coupling?

1. Permitted in the bodies of the towing vehicle and the towed vehicle.
2. Allowed only in the body of the towing vehicle.
3. Only permitted in the body of the towing vehicle.
4. Not allowed in the bodies of both vehicles.

Ans.'3

When towing with a rigid or flexible coupling, which of the following is permitted to be transported in a towed vehicle?

1. Allowed on the bus.
2. Allowed in a passenger car.
3. Allowed in the back of a truck when towing on a rigid hitch.

Ans.'2

At what maximum speed is the traffic allowed when towing by mechanical vehicles?

1. 30 km/h.
2. 40 km/h.
3. 50 km/h.
4. 60 km/h.
5. 70 km/h.

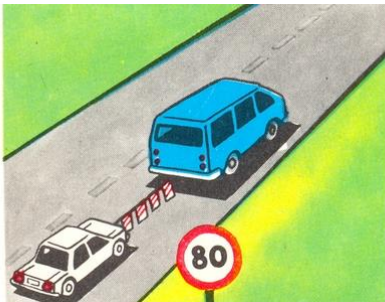
Ans.'3

Towing in icy conditions is prohibited:

1. On a flexible hitch.
2. On a rigid hitch.
3. By partial loading.

Ans.'1

What is the maximum speed at which towing can be done under these conditions?



1. 30 km/h.
2. 50 km/h.
3. 70 km/h.
4. 80 km/h.

Ans.'2

Is it permitted to carry people when towing on a flexible or rigid hitch in a towed motor vehicle?

1. Allowed in a bus and trolleybus.
2. Allowed only in a passenger car.
3. Allowed in the body of a truck and in a passenger car.
4. Allowed in the cabin of a truck and in a passenger car.
5. Prohibited.

Ans.'4

<p>Towing in icy conditions:</p> <ol style="list-style-type: none">1.Prohibited.2.Allowed.3.Allowed when towing on a rigid hitch or by partial loading. <p style="text-align: right;">Ans.'3</p>	<p>What is the maximum speed at which vehicles may be towed on a flexible coupling?</p> <ol style="list-style-type: none">1.70 km/h.2.60 km/h.3.50 km/h.4.40 km/h.5.30 km/h. <p style="text-align: right;">Ans.'3</p>
--	---

<p>In what cases is towing prohibited?</p> <ol style="list-style-type: none">1.In icy conditions with a hard hitch.2.In icy conditions with a flexible hitch.3.Motorcycles with a side trailer. <p style="text-align: right;">Ans.'2</p>	<p>When towing a motor vehicle outside built-up areas, the speed should not exceed:</p> <ol style="list-style-type: none">1.30 km/h.2.40 km/h.3.50 km/h.4.60 km/h.5.70 km/h. <p style="text-align: right;">Ans.'3</p>
--	---

<p>Is it legal to tow motorcycles?</p> <ol style="list-style-type: none">1.Allowed to tow motorcycles with a side trailer.2.Towing of motorcycles without side trailer is allowed.3.Allowed in both cases. <p style="text-align: right;">Ans.'1</p>	<p>When towing, what distance should the flexible hitch provide between the vehicles?</p> <ol style="list-style-type: none">1.1 - 3 m.2.2 - 4 m.3. 3 - 6 m.4.4 - 6 m.5.4 - 8 m. <p style="text-align: right;">Ans.'4</p>
---	--

<p>What is the maximum speed allowed for passenger cars with trailers on highways?</p> <p>1.110 km/h. 2.100 km/h. 3.90 km/h. 4.80 km/h. 5.70 km/h.</p> <p>Ans.'3</p>	<p>When towing on a rigid coupling, the distance between the vehicles must be no more than:</p> <p>1.4 m. 2.5 m. 3.6 m.</p> <p>Ans.'1</p>
--	---

<p>When towing mechanical vehicles with partial loading, transportation of passengers is allowed to:</p> <p>1.In the body of the towing vehicle. 2.In the body of the towing vehicle. 3.In the body of the towing vehicle. 4.In the cabin of the towing vehicle.</p> <p>Ans.'4</p>	<p>Is it allowed to tow motorcycles with a side trailer?</p> <p>1.Allowed only on a rigid hitch. 2.Prohibited. 3.Allowed.</p> <p>Ans.'3</p>
--	---

<p>What is the maximum speed allowed when towing with a flexible hitch?</p> <p>1.70 km/h. 2.60 km/h. 3.50 km/h. 4.40 km/h. 5.30 km/h.</p> <p>Ans.'3</p>	<p>Cargo is placed and, if necessary, secured on the vehicle so that it:</p> <p>1.Does not protrude above the sides of the platform. 2.Does not create noise, raise dust or pollute the environment. 3.Does not protrude more than 0.8 m beyond the vehicle's rear.</p> <p>Ans.'2</p>
---	---

<p>It is allowed to carry children who are over the age of 18 in the front seat of a passenger car that is not equipped with a child restraint device:</p> <ol style="list-style-type: none">1. 10 years of age.2. 11 years of age.3. 12 years of age. <p style="text-align: right;">Ans.'3</p>	<p>Is it allowed to transport people on a cargo trailer:</p> <ol style="list-style-type: none">1. Prohibited.2. Allowed.3. Only persons accompanying the cargo are allowed. <p style="text-align: right;">Ans.'1</p>
---	--

<p>Are children under the age of 12 allowed to ride on the back of a motorcycle?</p> <ol style="list-style-type: none">1. Allowed.2. Prohibited. <p style="text-align: right;">Ans.'2</p>	<p>Is it allowed to travel in the back of a truck that is not equipped to carry people?</p> <ol style="list-style-type: none">1. Prohibited.2. Allowed on roads other than highways.3. Allowed only to persons accompanying or following cargo, provided they are provided with a seating position below the level of the sides. <p style="text-align: right;">Ans.'3</p>
--	---

<p>Transporting people on a cargo trailer:</p> <ol style="list-style-type: none">1. Prohibited.2. Allowed.3. Only persons accompanying the cargo are allowed. <p style="text-align: right;">Ans.'1</p>	<p>Is it allowed to transport people in a towed bus when towing with a rigid or flexible coupling?</p> <ol style="list-style-type: none">1. Allowed.2. Up to 8 passengers are allowed.3. Prohibited. <p style="text-align: right;">Ans.'3</p>
--	---

<p>Towing the bus in icy conditions is prohibited:</p> <ol style="list-style-type: none">1.On a flexible hitch.2.On a rigid hitch. <p style="text-align: right;">Ans.'1</p>	<p>Is it allowed to transport people in a towed motor vehicle when towing on a flexible or rigid hitch?</p> <ol style="list-style-type: none">1.Allowed on the bus and trolleybus.2.Allowed in the cab of a truck and in a passenger car.3.Allowed in the body of a truck and in a passenger car.4.Prohibited. <p style="text-align: right;">Ans.'2</p>
--	--

<p>It is prohibited to transport people if:</p> <ol style="list-style-type: none">1.The number of passengers in the cabin of a bus traveling on tourist routes, exceeds the number of seats equipped for seating.2.The number of people in the cabin of the bus traveling on intercity routes exceeds the number of furnished seats.3.In both cases. <p style="text-align: right;">Ans.'3</p>	<p>When transporting an organized group of children in the cabin of the bus should be a minimum:</p> <ol style="list-style-type: none">1.One adult escort.2.Two adult escorts.3.Three adult escorts. <p style="text-align: right;">Ans.'1</p>
---	---

<p>What is the maximum speed allowed for intercity and interlocal buses on all roads outside populated areas?</p> <ol style="list-style-type: none">1.60 km/h.2.70 km/h.3.90 km/h. <p style="text-align: right;">Ans.'3</p>	<p>Are buses allowed to travel at 70 km/h outside populated areas?</p> <ol style="list-style-type: none">1.Allowed.2.Prohibited. <p style="text-align: right;">Ans.'1</p>
---	--

<p>The movement of intercity buses in settlements is allowed at a speed of no more than:</p> <p>1.60 km/h. 2.70 km/h. 3.90 km/h.</p> <p>Ans.'1</p>	<p>What is the maximum speed allowed for intercity buses outside populated areas?</p> <p>1.60 km/h. 2.70 km/h. 3.90 km/h.</p> <p>Ans.'3</p>
--	---

<p>What is the maximum speed allowed for buses in the zone of "Residential Zone" and "End of Residential Zone" signs?</p> <p>1.20 km/h. 2.30 km/h. 3.40 km/h</p> <p>Ans.'1</p>	<p>Is it allowed to transport people in a towed bus with a rigid or flexible hitch:</p> <p>1.Allowed. 2.Prohibited.</p> <p>Ans.'2</p>
--	---

<p>When transporting passengers in the body of a truck equipped for the transportation of people, the driver is required to move at a speed not exceeding:</p> <p>1.50 km/h. 2.60 km/h 3.70 km/h</p> <p>Ans.'2</p>	<p>Is it allowed to carry passengers in a towing bus?</p> <p>1.Prohibited. 2.Allowed.</p> <p>Ans.'2</p>
--	---

What is the maximum speed allowed for intercity buses on roads marked with this sign.



- 1. 70 km/h.
- 2. 90 km/h
- 3. 110 km/h

Ans.'2

At what maximum speed can the driver of the towing bus move in this situation?



- 1. 50 km/h.
- 2. 60 km/h
- 3. 90 km/h

Ans.'1

What is the maximum speed at which the driver of the intercity bus can move in this situation?



- 1. 60 km/h.
- 2. 70 km/h
- 3. 80 km/h
- 4. 90 km/h

Ans.'4

At what speed can a bus driver continue driving in the lane marked by this sign?



- 1. Not less than 60 km/h.
- 2. Not less than 60 km/h, but not more than 70 km/h:
- 3. Not less than 60 km/h, but not more than 90 km/h:

Ans.'3

Is it allowed to carry passengers in the bus cabin in this situation?



- 1. Prohibited.
- 2. Allowed.
- 3. Allowed, only according to the number of seats.

Ans.'1

Is it allowed to transport passengers on a towed bus when towing with a rigid or flexible hitch?

- 1. Prohibited.
- 2. Allowed, with a rigid hitch.
- 3. Allowed.

Ans.'1

When towing, the towed vehicle must have

- 1.High beam headlights.
- 2.Low beam headlights.
- 3.Hazard warning lights.

Ans.'3

What is the maximum speed allowed for intercity buses on highways?

- 1.70 km/h.
- 2.80 km/h.
- 3.90 km/h.
- 4.100 km/h.
- 5.110 km/h

Ans.'3

What is the maximum speed allowed for buses on road segments marked with this road sign?



- 1.70 km/h.
- 2.80 km/h
- 3.90 km/h
- 4.100 km/h
- 5.110 km/h

Ans.'3

What is the maximum speed allowed for intercity buses on highways?

- 1.70 km/h.
- 2.80 km/h.
- 3.110 km/h.
- 4.100 km/h.
- 5.90 km/h.

Ans.'5

At what speeds are vehicles allowed in areas designated by road signs "Residential Area" and "End of Residential Area"?

- 1.No more than 5 km/h.
- 2.No more than 10 km/h.
- 3.No more than 20 km/h.

Ans.'3



- 1.70 km/h.
- 2.80 km/h
- 3.90 km/h
- 4.100 km/h
- 5.110 km/h

Ans.'5

What is the maximum speed limit for a truck driver with a maximum weight of not more than 3.5 tons in the area affected by the signs?



1. Not more than 50 km / h
2. Not more than 70 km / h
3. Not more than 90 km / h

Ans.'3

When towing a motor vehicle, which lane of this road can you continue driving?



1. Right only
2. Any

Ans.'1

What conditions should the driver consider when choosing a speed that does not exceed the set speed?

1. Road surface condition
2. Visibility in the direction of traffic
3. The two conditions mentioned.

Ans.'3

What speed should the driver choose within the maximum allowable range?

1. Ensuring full control of the vehicle
2. Free to choose any speed that does not exceed the maximum allowable

Ans.'1

The driver is prohibited to

1. Exceed the maximum speed defined by the technical characteristics of the given vehicle.
2. Exceed the speed ensured by the "Speed Limit" recognition mark on the vehicle.
3. Without having to drive at very low speeds, obstructing the movement of other vehicles.
4. Brake sharply unless necessary to prevent a traffic accident
5. All the above actions

Ans.'5

The driver is prohibited

1. Cross the railway crossing at a speed of more than 30 km / h
2. Cross the railway crossing at a speed of less than 30 km / h
3. Driving at a speed of 8 km / h at low speeds with tractors attached to the rails without the permission of the head of the railway section

Ans.'3

<p>When approaching an intersection, the driver must drive at a speed that:</p> <ol style="list-style-type: none"> 1.Does not exceed the maximum allowed in this section. 2.Be able to stop or release vehicles with priority right of way <p style="text-align: right;">Ans.'2</p>	<p>Speeding by the driver is prohibited if:</p> <ol style="list-style-type: none"> 1.This will prevent from the driver of the overtaking vehicle overtaking him/her 2.It is necessary to clear the way of the driver who stopped to give way to him/her. 3.This is done to clear the intersection <p style="text-align: right;">Ans.'1</p>
<p>The driver must slow down</p> <ol style="list-style-type: none"> 1.Vehicles equipped with the "Child Transport" sign when approaching such vehicles during picking up and dropping off children 2.In case of becoming slant 3.In case of obstruction or danger for traffic. 4.Blue-red flashing lights when approaching a vehicle with a special audible signal, as well as when approaching a vehicle with blue or blue-flashing red lights on. 5.In all the above cases <p style="text-align: right;">Ans.'5</p>	<p>Should the cargo be marked "Large Cargo" during daylight hours in case of protruding from the side of the vehicle 0.5 m from the external border light under "Cargo with large border light" recognition sign, and during night hour and under the condition of insufficient visibility, also white from the front, and rear with red lamp or reflectors?</p> <ol style="list-style-type: none"> 1.Yes 2.No <p style="text-align: right;">Ans.'1</p>
<p>The driver, who has a B and C category driving license for driving trucks in compliance with the rules for transporting persons by trucks, is allowed to transport up to</p> <ol style="list-style-type: none"> 1.8 passengers 2.9 passengers 3.4 passengers <p style="text-align: right;">Ans.'1</p>	<p>It is forbidden to transport children under 12 years old</p> <ol style="list-style-type: none"> 1.In the body of a truck with a side body. 2.In the body of truck with van body <p style="text-align: right;">Ans.'1</p>

<p>Should the cargo be marked "Large Cargo" during daylight hours in case of protruding from the side of the vehicle 1.2 m from the external border light under "Cargo with large border light" recognition sign, and during night hour and under the condition of insufficient visibility, also white from the front, and rear with red lamp or reflectors?</p> <p>1.Yes 2.No</p> <p>Ans.'1</p>	<p>Cargo transportation is prohibited if:</p> <ol style="list-style-type: none">1.The driver's field of vision is restricted2.Driving a vehicle becomes uncontrollable and stability is weakened3.The external lighting devices and reflectors, number plates or identification marks are covered, as well as the perception of hand signals is obstructed4.In all the cases listed. <p>Ans.'4</p>
<p>If the condition and layout of the cargo does not allow it to be transported in accordance with the requirements of the rules, then the driver is required to</p> <ol style="list-style-type: none">1.Deliver the cargo successfully to the nearest unloading location2.Eliminate violations or stop further driving <p>Ans.'2</p>	<p>Should the cargo be marked "Large Cargo" during daylight hours in case of protruding from the side of the vehicle 0.6 m from the external border light under "Cargo with large border light" recognition sign, and during night hour and under the condition of insufficient visibility, also white from the front, and rear with red lamp or reflectors?</p> <p>1.Yes 2.No</p> <p>Ans.'2</p>
<p>Should the cargo be marked "Large Cargo" during daylight hours in case of protruding from the side of the vehicle 0.3 m from the external border light under "Cargo with large border light" recognition sign, and during night hour and under the condition of insufficient visibility, also white from the front, and rear with red lamp or reflectors?</p> <p>1.Yes 2.No</p> <p>Ans.'2</p>	